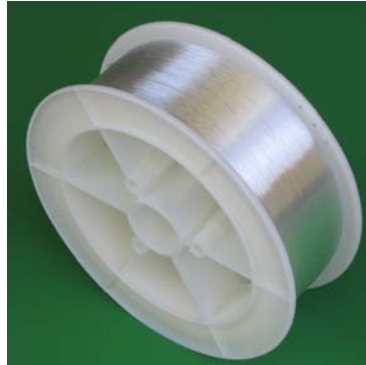


PMMA END LIGHT FIBER OPTIC CABLE

**Technical Data:****Core Material:** transparent polymethyl methacrylate Resin (PMMA)**Cladding Material:** Fluorinated Polymer**Color:** Clear**Outside Diameter (O.D.):** 0.25mm – 3.00mm**Spool Length:** see chart below**Bend Radius:** min 6 x fiber diameter**Core Refractive Index:** 1.49**Acceptance Angle:** 60°**Numeric Aperture:** 0.50**Attenuation:** less than 1.6% per foot (<.020dB/m)**Operating Temperature Range:** Min. -55°C, Max. +70°C**Cutting Methods:** Sharp shears, Hot knife.**Chemical Resistance:** attacked by organic solvents (e.g. acetone, thinners, ethyl acetate, gasoline, benzene, and toluene).**Adhesives:** use room temperature curing, two-component epoxy adhesive which does not use an amine hardener, is recommended. Solvent based adhesives should not be used, as they can damage the fiber.**Note:** Fiber is designed for light transmission only. The material should not be used to bear weight.

The End Beam fiber is flexible, easy to cut and can be lit with LED, Metal Halide and Halogen light sources. Ideal for hard to light areas where access is difficult.

Applications:

- Star Drops and star curtains
- Art Glass
- Star Ceilings
- Countertops
- Interior and exterior signage
- Automotive Interiors
- Scale models
- Display cases
- Aquariums

Benefits:

- Light Source is Remote
- No Electricity
- No Heat or UV
- Flexible
- Virtually Maintenance Free
- Weather Resistant
- Low Light Loss

Ordering Information:

Stock No.	Fiber Diameter	Spool Length
EL10	0.25mm	12,000m (39,372ft.)
EL20	0.50mm	6,000m (19,686ft.)
EL30	0.75mm	2,700m (8,858ft.)
EL40	1.00mm	1,500m (4,922ft.)
EL60	1.5mm	700m (2,296ft.)
EL80	2.0mm	250m (820ft.)
EL100	2.5mm	250m (820ft.)
EL120	3.0mm	150m (492ft.)

Vivid Light Design